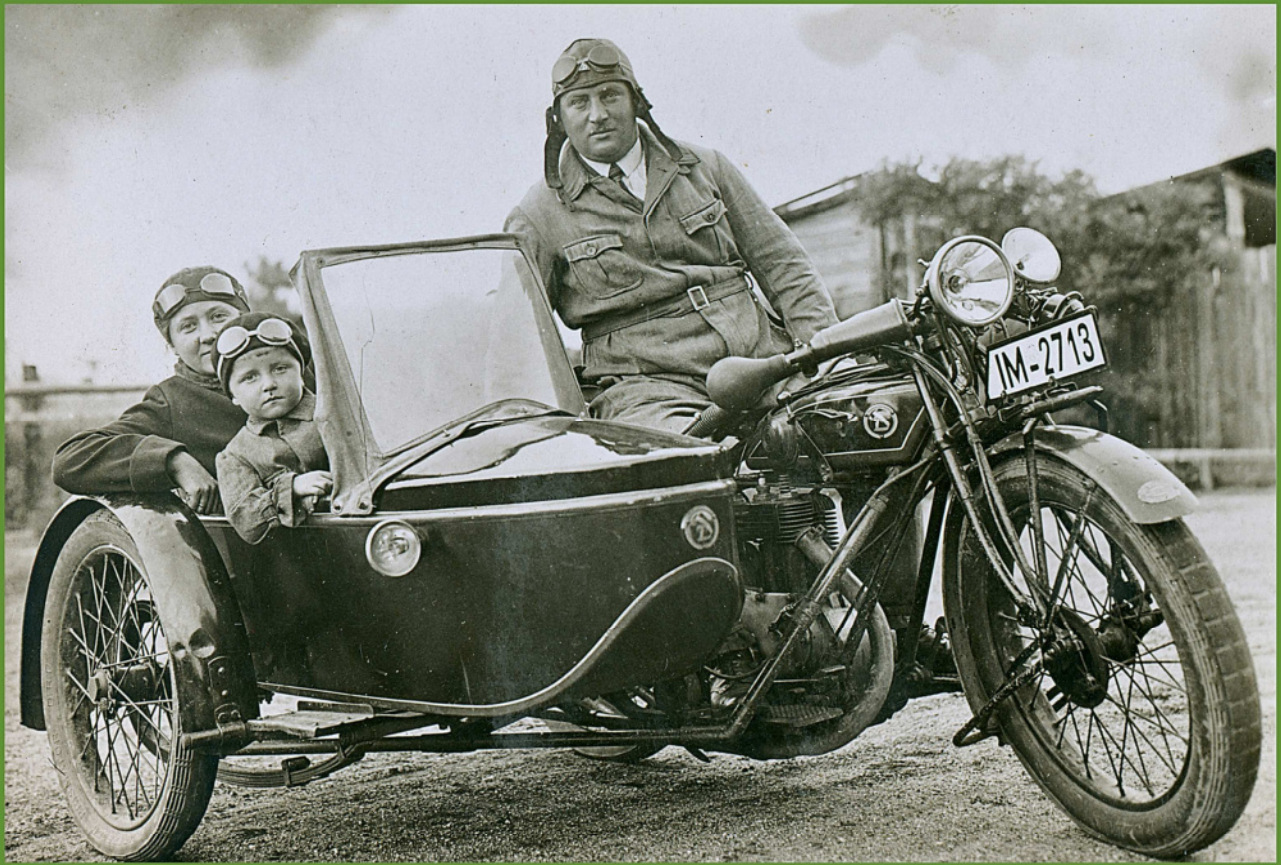


**Fahrt  
D-RAD**

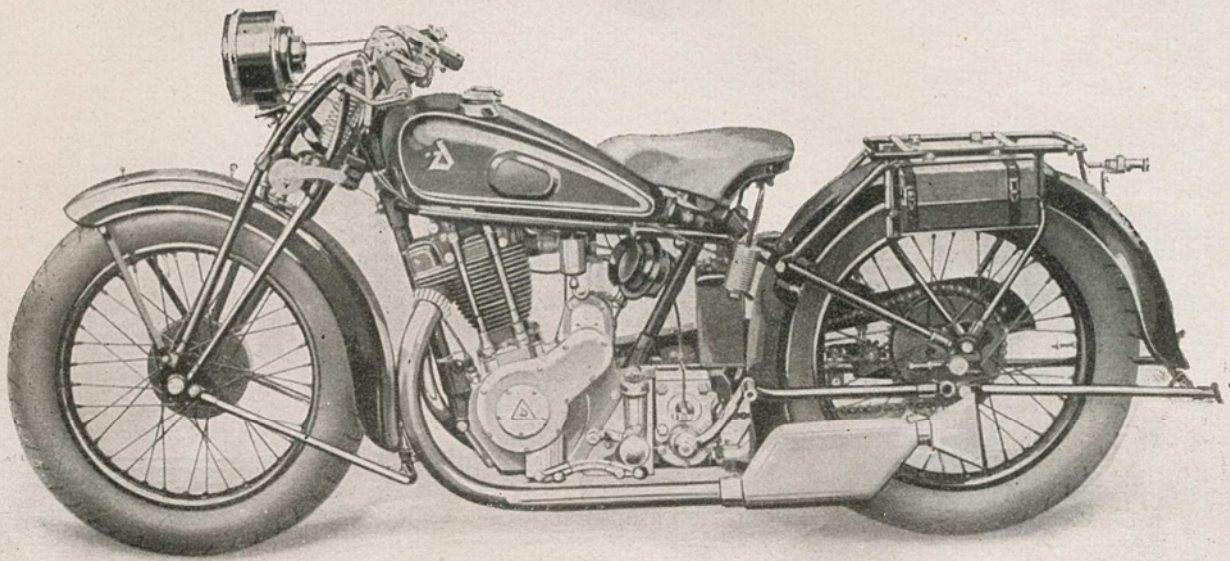


[www.d-rad.ch](http://www.d-rad.ch)

# D-Rad Kalender 2011

2011

# Januar

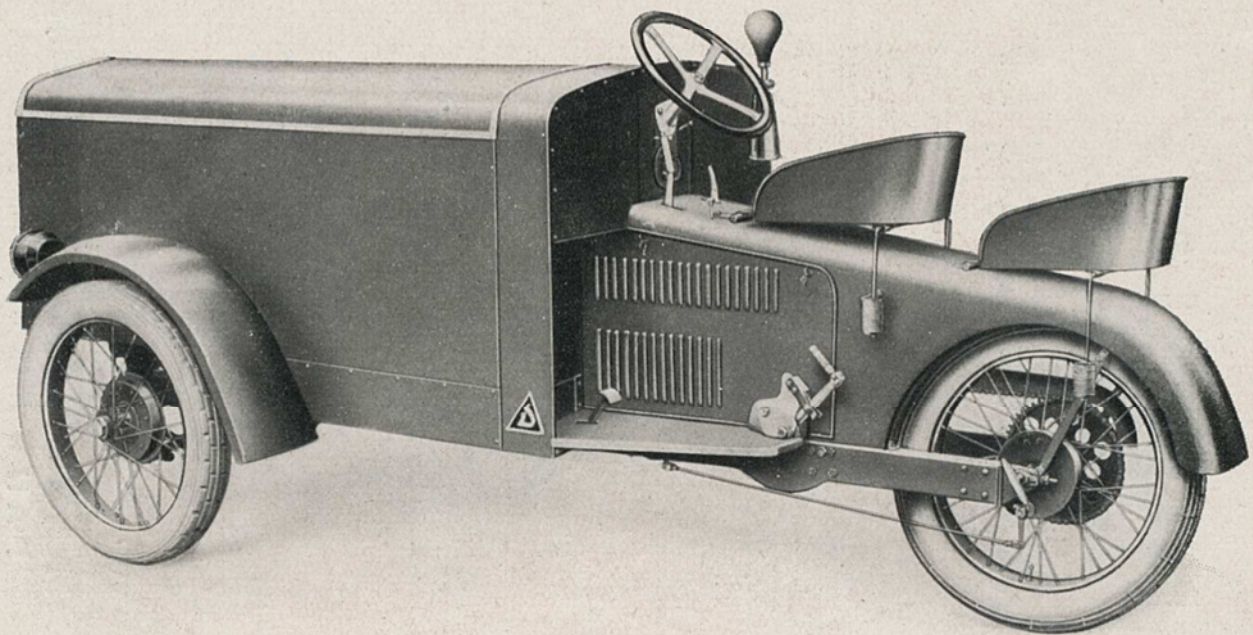


D-Sport R 10

Mo	Di	Mi	Do	Fr	Sa	So
					01	02
03	04	05	06	07	08	09
10	11	12	13	14	15	16
17	18	19	20	21	22	23
24	25	26	27	28	29	30
31						

2011

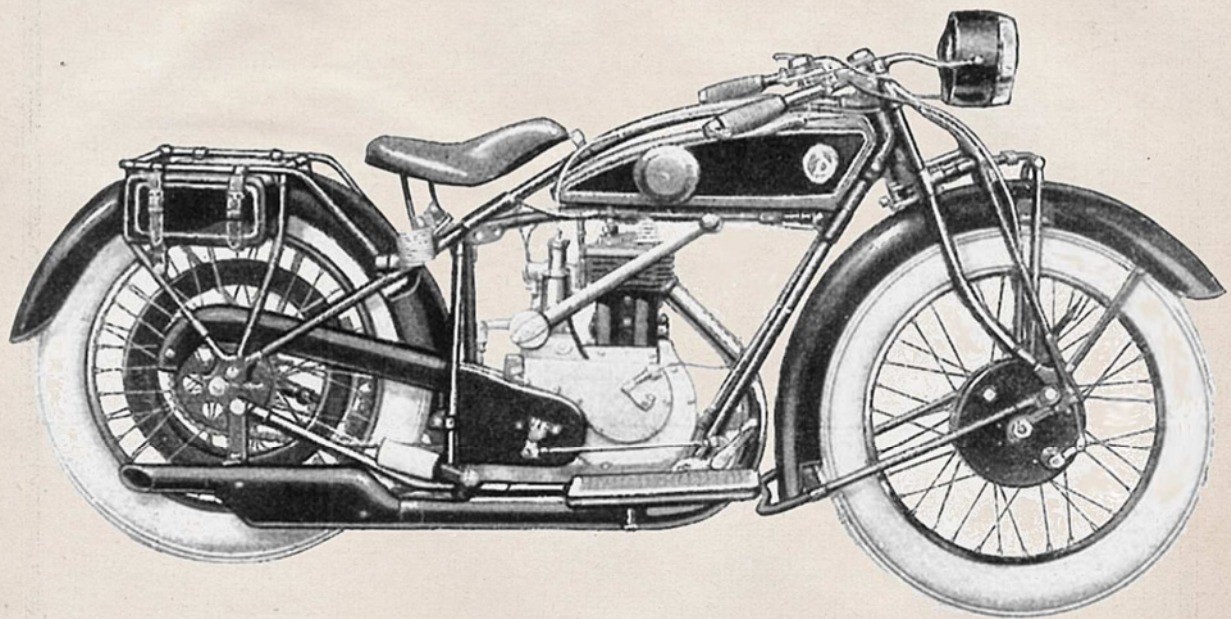
# Februar



Ansicht des D-Lieferwagens L 7.

Mo	Di	Mi	Do	Fr	Sa	So
	01	02	03	04	05	06
07	08	09	10	11	12	13
14	15	16	17	18	19	20
21	22	23	24	25	26	27
28						

2011  
**März**

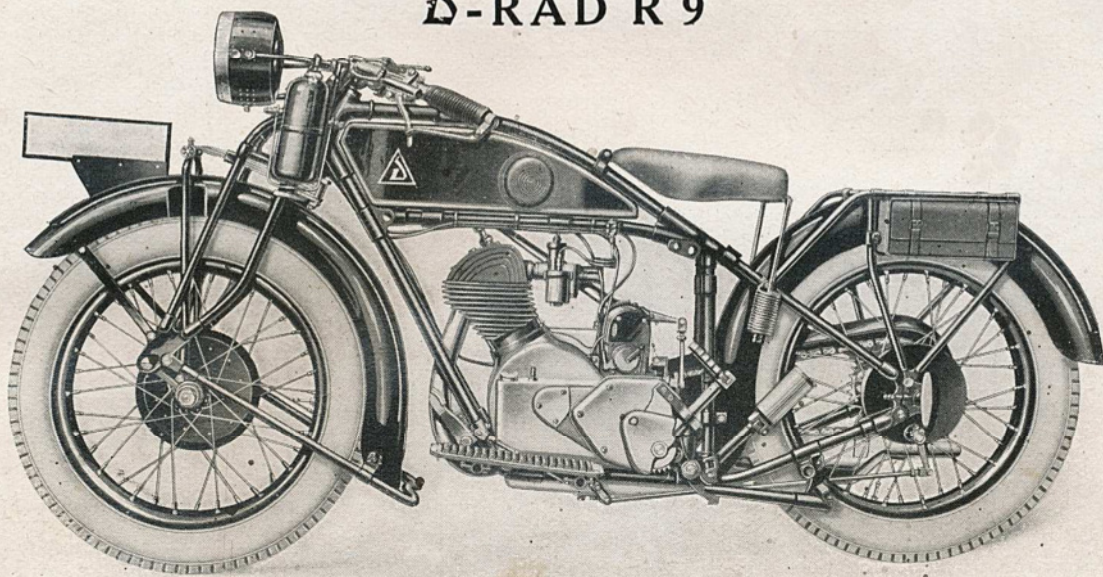


↳ -Rad 1928 Ausführung K (mit Karbidbeleuchtung und Magnetapparat)

<b>Mo</b>	<b>Di</b>	<b>Mi</b>	<b>Do</b>	<b>Fr</b>	<b>Sa</b>	<b>So</b>
	01	02	03	04	05	06
07	08	09	10	11	12	13
14	15	16	17	18	19	20
21	22	23	24	25	26	27
28	29	30	31			

2011  
**April**

**D-RAD R 9**

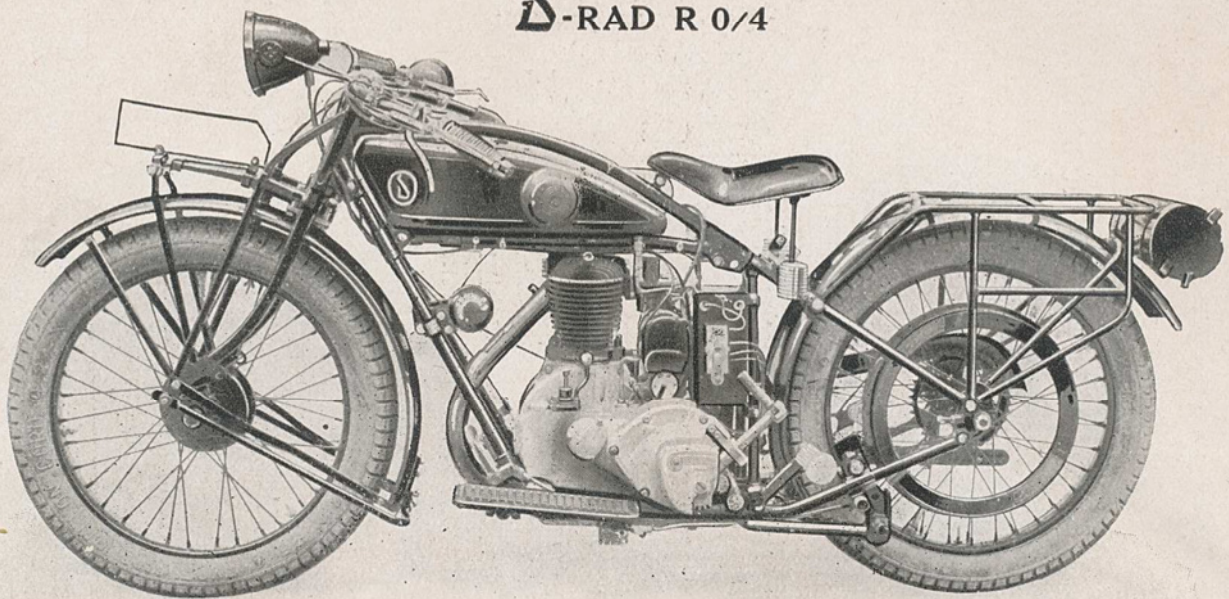


Ansicht des **D-Rades R 9**. Ausführung K.

<b>Mo</b>	<b>Di</b>	<b>Mi</b>	<b>Do</b>	<b>Fr</b>	<b>Sa</b>	<b>So</b>
				<b>01</b>	<b>02</b>	<b>03</b>
<b>04</b>	<b>05</b>	<b>06</b>	<b>07</b>	<b>08</b>	<b>09</b>	<b>10</b>
<b>11</b>	<b>12</b>	<b>13</b>	<b>14</b>	<b>15</b>	<b>16</b>	<b>17</b>
<b>18</b>	<b>19</b>	<b>20</b>	<b>21</b>	<b>22</b>	<b>23</b>	<b>24</b>
<b>25</b>	<b>26</b>	<b>27</b>	<b>28</b>	<b>29</b>	<b>30</b>	

2011  
**Mai**

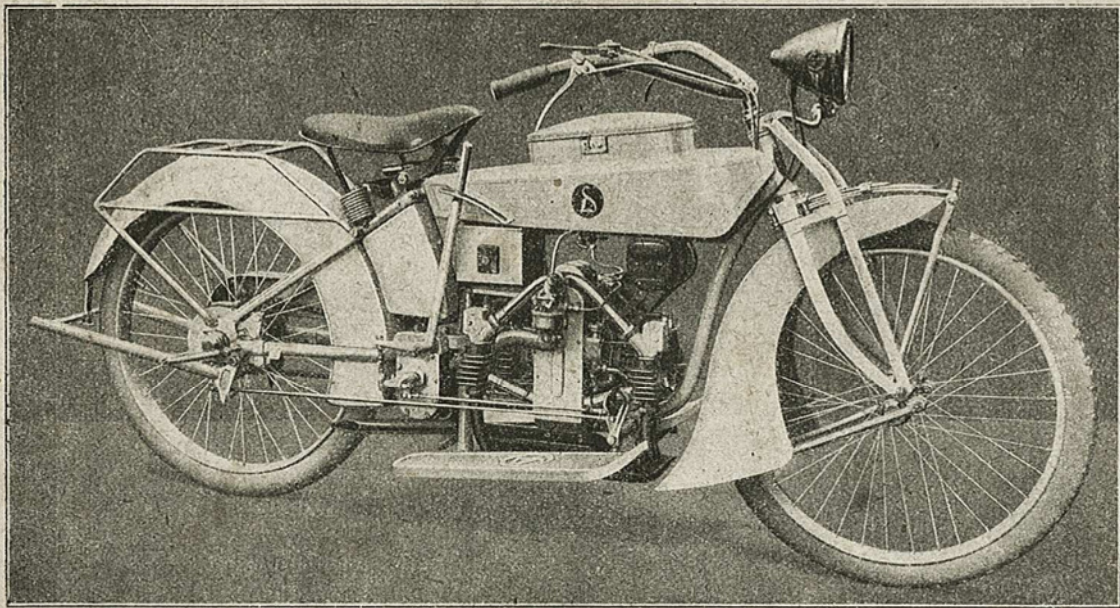
Δ-RAD R 0/4



Ansicht des Δ-Rades mit elektrischer Beleuchtung

Mo	Di	Mi	Do	Fr	Sa	So
						<b>01</b>
<b>02</b>	<b>03</b>	<b>04</b>	<b>05</b>	<b>06</b>	<b>07</b>	<b>08</b>
<b>09</b>	<b>10</b>	<b>11</b>	<b>12</b>	<b>13</b>	<b>14</b>	<b>15</b>
<b>16</b>	<b>17</b>	<b>18</b>	<b>19</b>	<b>20</b>	<b>21</b>	<b>22</b>
<b>23</b>	<b>24</b>	<b>25</b>	<b>26</b>	<b>27</b>	<b>28</b>	<b>29</b>
<b>30</b>	<b>31</b>					

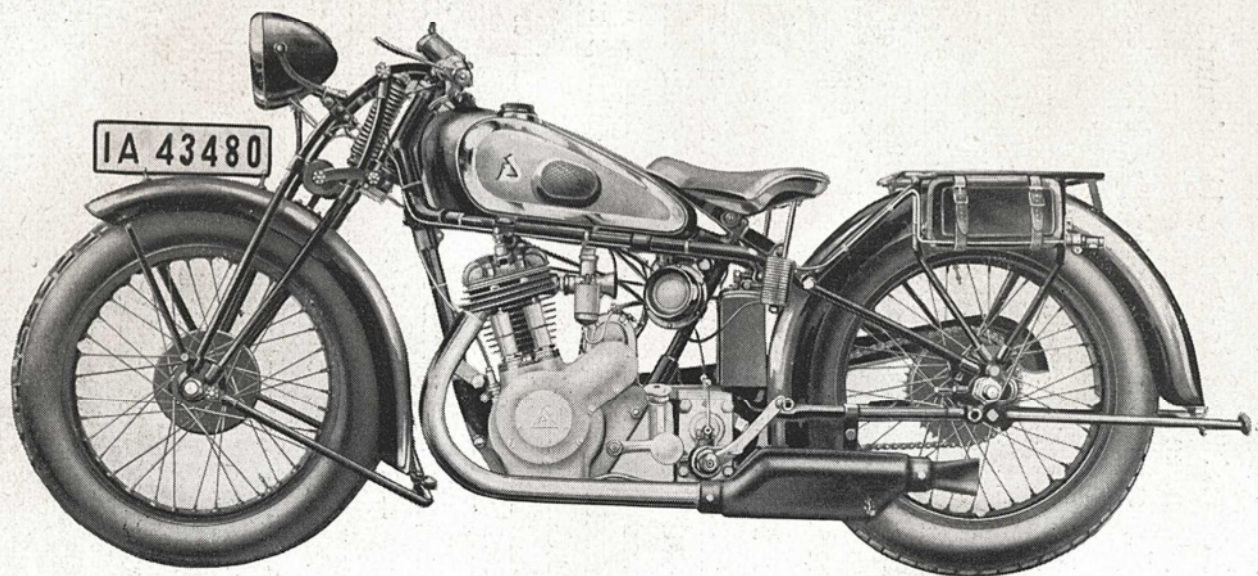
2011  
**Juni**



Das D-Motorrad (Star).

Mo	Di	Mi	Do	Fr	Sa	So
		01	02	03	04	05
06	07	08	09	10	11	12
13	14	15	16	17	18	19
20	21	22	23	24	25	26
27	28	29	30			

2011  
**Juli**



**Δ-Rad R 11, linke Seite.**

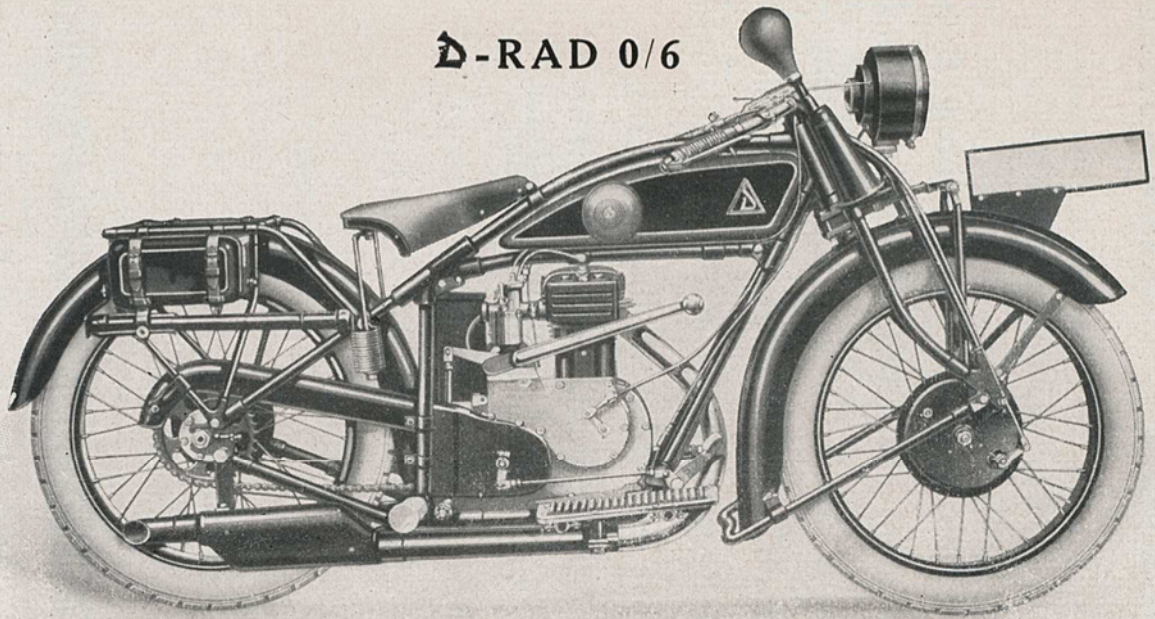
<b>Mo</b>	<b>Di</b>	<b>Mi</b>	<b>Do</b>	<b>Fr</b>	<b>Sa</b>	<b>So</b>
				<b>01</b>	<b>02</b>	<b>03</b>
<b>04</b>	<b>05</b>	<b>06</b>	<b>07</b>	<b>08</b>	<b>09</b>	<b>10</b>
<b>11</b>	<b>12</b>	<b>13</b>	<b>14</b>	<b>15</b>	<b>16</b>	<b>17</b>
<b>18</b>	<b>19</b>	<b>20</b>	<b>21</b>	<b>22</b>	<b>23</b>	<b>24</b>
<b>25</b>	<b>26</b>	<b>27</b>	<b>28</b>	<b>29</b>	<b>30</b>	<b>31</b>



2011

# August

Ð-RAD 0/6



Ansicht des Ð-Rades mit elektrischer Beleuchtung.

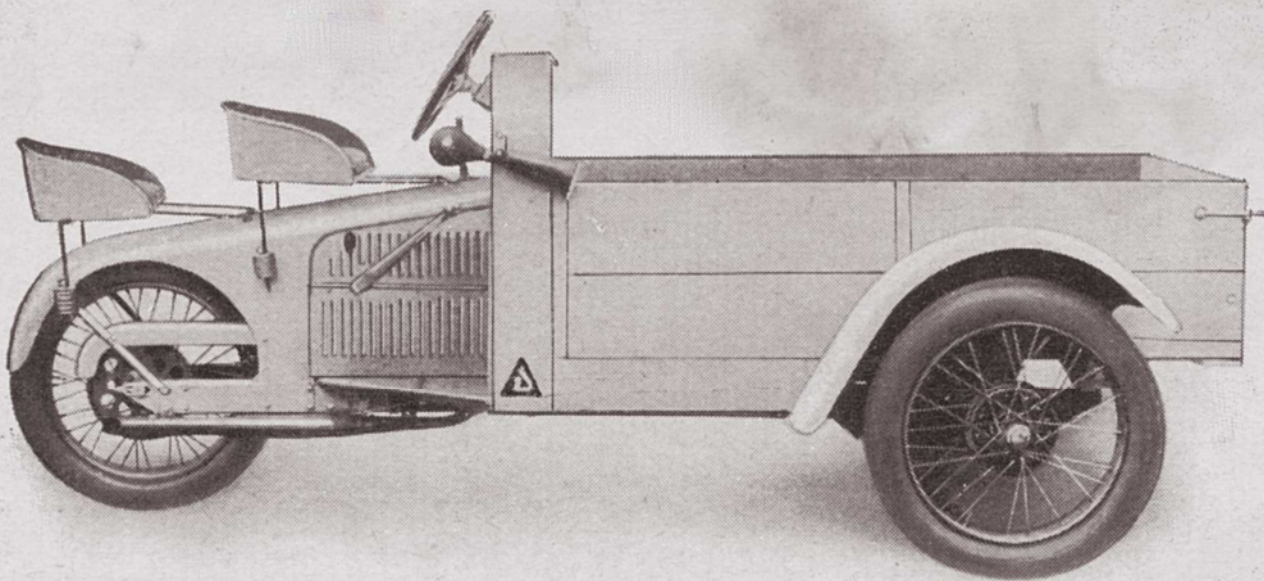
Mo	Di	Mi	Do	Fr	Sa	So
01	02	03	04	05	06	07
08	09	10	11	12	13	14
15	16	17	18	19	20	21
22	23	24	25	26	27	28
29	30	31				

17. Internationales  
D-Rad Treffen

mehr Infos unter  
[www.d-rad.ch](http://www.d-rad.ch)

2011

# September



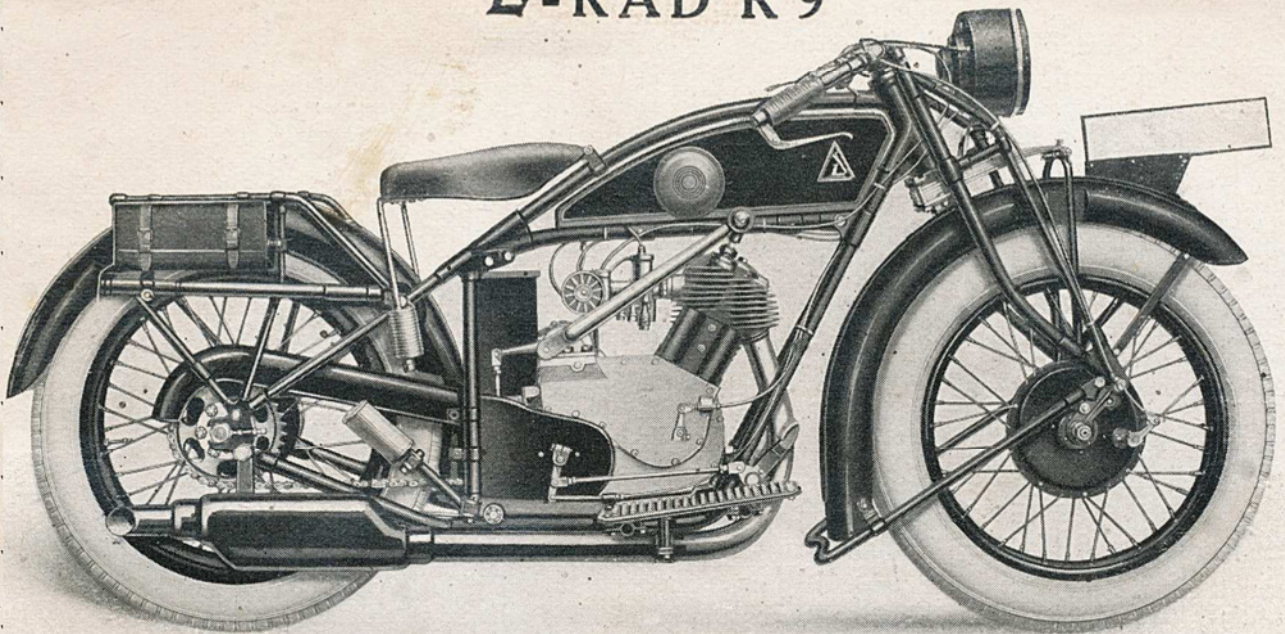
Ansicht des  $\delta$ -Lieferwagens L 7.

Mo	Di	Mi	Do	Fr	Sa	So
			01	02	03	04
05	06	07	08	09	10	11
12	13	14	15	16	17	18
19	20	21	22	23	24	25
26	27	28	29	30		

2011

# Oktober

Ⓓ-RAD R 9

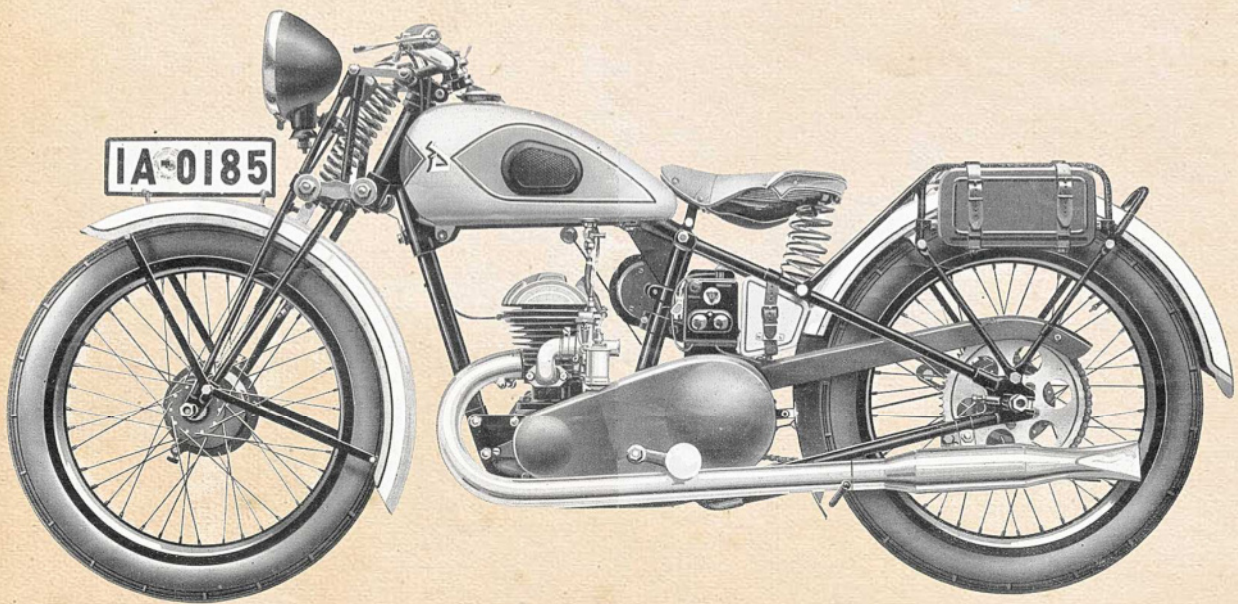


Ansicht des Ⓓ-Rades R 9. Ausführung EZ.

Mo	Di	Mi	Do	Fr	Sa	So
					01	02
03	04	05	06	07	08	09
10	11	12	13	14	15	16
17	18	19	20	21	22	23
24	25	26	27	28	29	30
31						

2011

# November




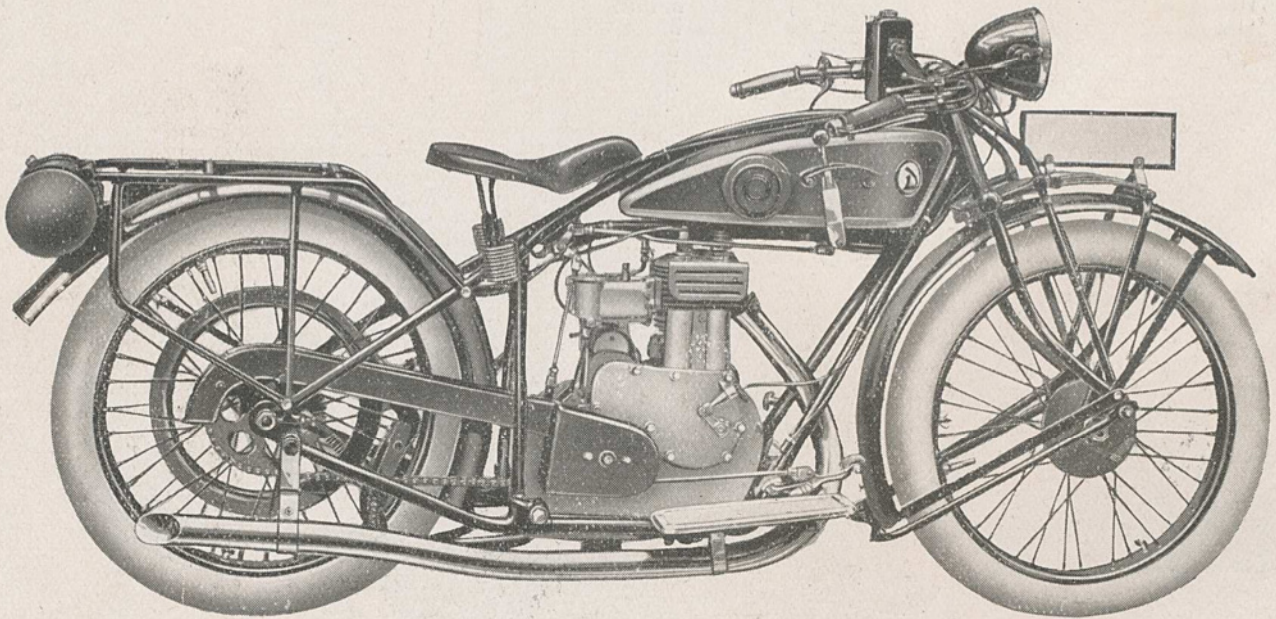
Δ - Rad R20, linke Seite.


Mo	Di	Mi	Do	Fr	Sa	So
	01	02	03	04	05	06
07	08	09	10	11	12	13
14	15	16	17	18	19	20
21	22	23	24	25	26	27
28	29	30				

2011

# Dezember

-RAD R 0/4



Ansicht des -Rades mit Karbid-Beleuchtung

Mo	Di	Mi	Do	Fr	Sa	So
			01	02	03	04
05	06	07	08	09	10	11
12	13	14	15	16	17	18
19	20	21	22	23	24	25
26	27	28	29	30	31	